



GEZE GmbH
P.O.Box 1363
71226 Leonberg

GEZE GmbH
Reinhold-Vöster-Str.21-29
71229 Leonberg
Germany

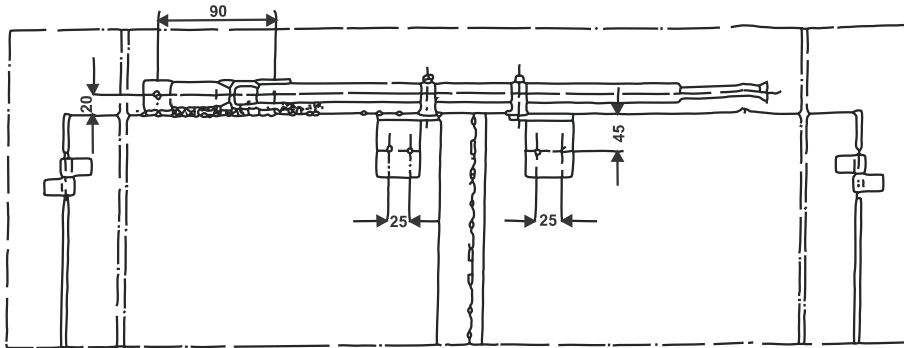
Mat. Nr.: 129137
Änd. St.: 00
Zeichn. Nr.: 21203-9-0952

Tel.: +49(0)7152 203-0
Fax: +49(0)7152 203-10 www.geze.com

Änderungen vorbehalten

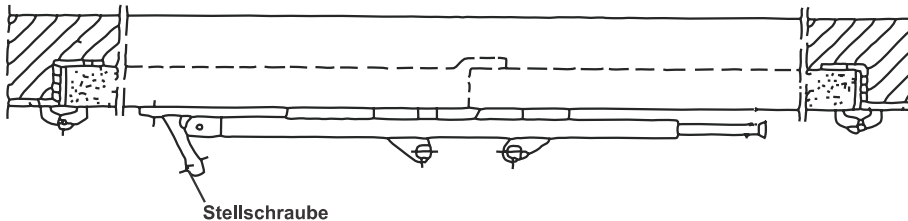
GEZE Closing Sequencer GEZE Schließfolgeregler

Mounting Instructions

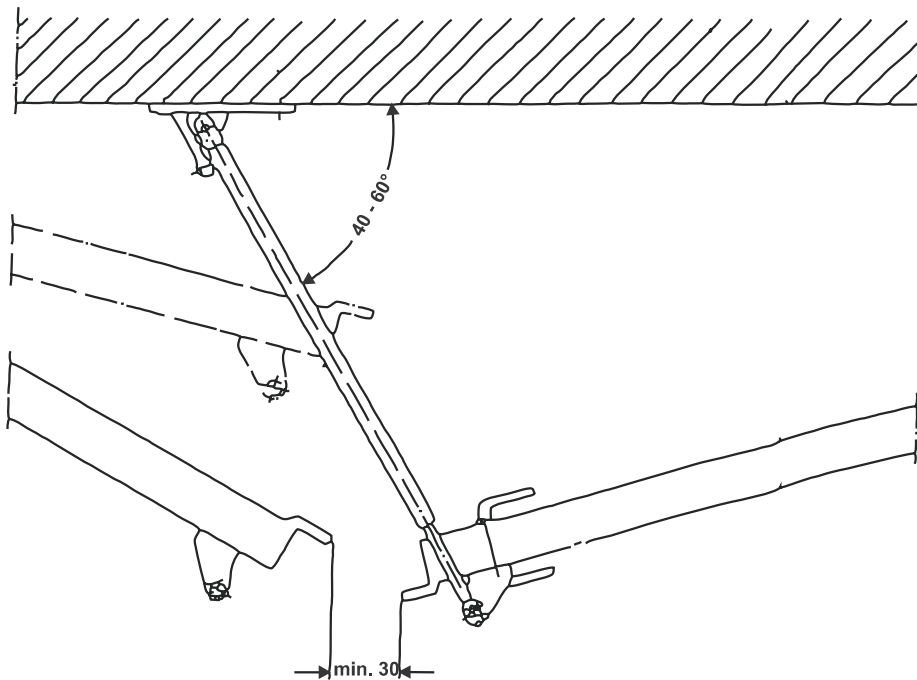


The closing sequencer has the task, to control the closing of 2-leaf fire doors in the right sequence.

First the support brackets will be fixed at the top edges of both door leaves.



Then the telescopic arm will be fixed at the upper frame that it will hit in upright position the support bracket of the active leaf. The positioning angle can be corrected by the adjusting screw.



After both leaves have been opened, the active leaf must hold up the active leaf as long as the passive leaf will be slipped over. The passive leaf now picks up the telescopic arm with its support bracket and puts it flat on the frame. Now the active leaf can follow and close in the right sequence.